


“aseity” of God

Independent, Self-contained (*vs. derivative, dependent creature*)

 = Yahweh

 ויאמר אלהים אל-מושה אהיה אשר אהיה

“condescension” of God

He “comes down” (*to our creature level*) in conversation and contract-making



Abrahamic Covenant

Gen. 12:1-3 the call

Gen. 15:5-21 the signing

Gen. 17:1-14 the symbol

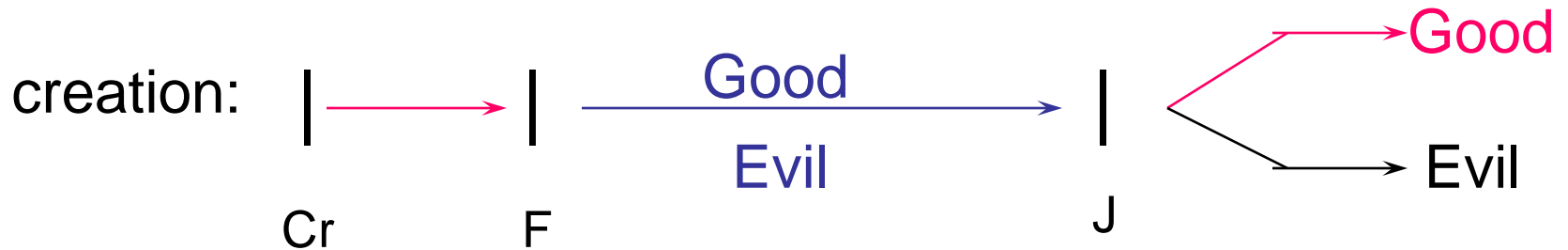
**Gen. 22:15-18
confirmation**

Royal Grant

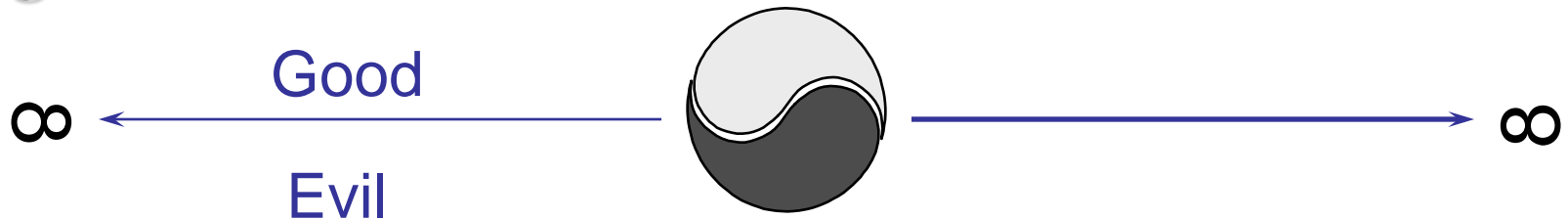
**Unconditional blessing by
a superior to an
inferior merely on the
basis of the
benefactor's good will
and loyalty of the
beneficiary**

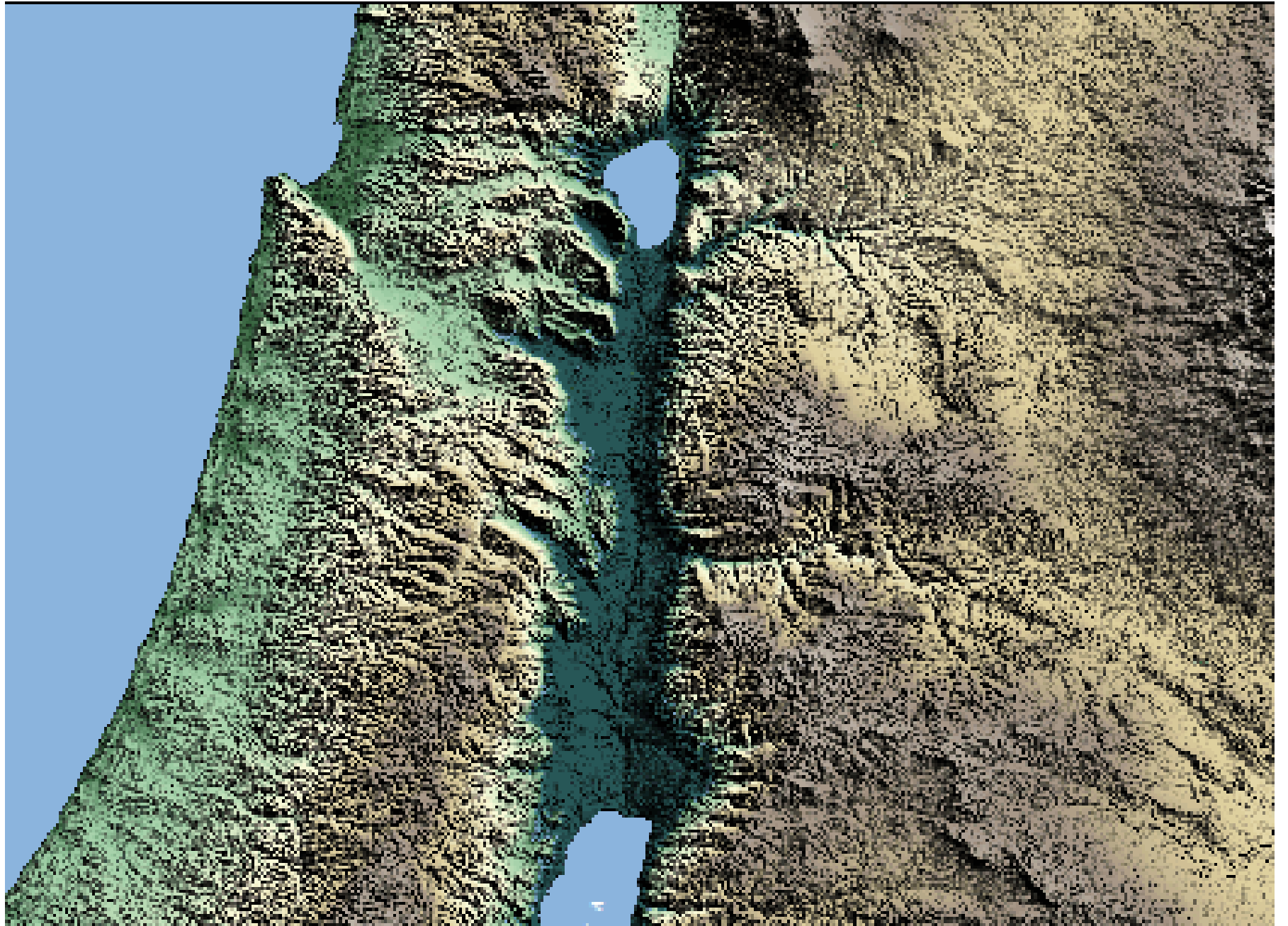
Who Has the REAL “Evil Problem”?

Christian: Good/Evil Mix is “Abnormal” & Temporary

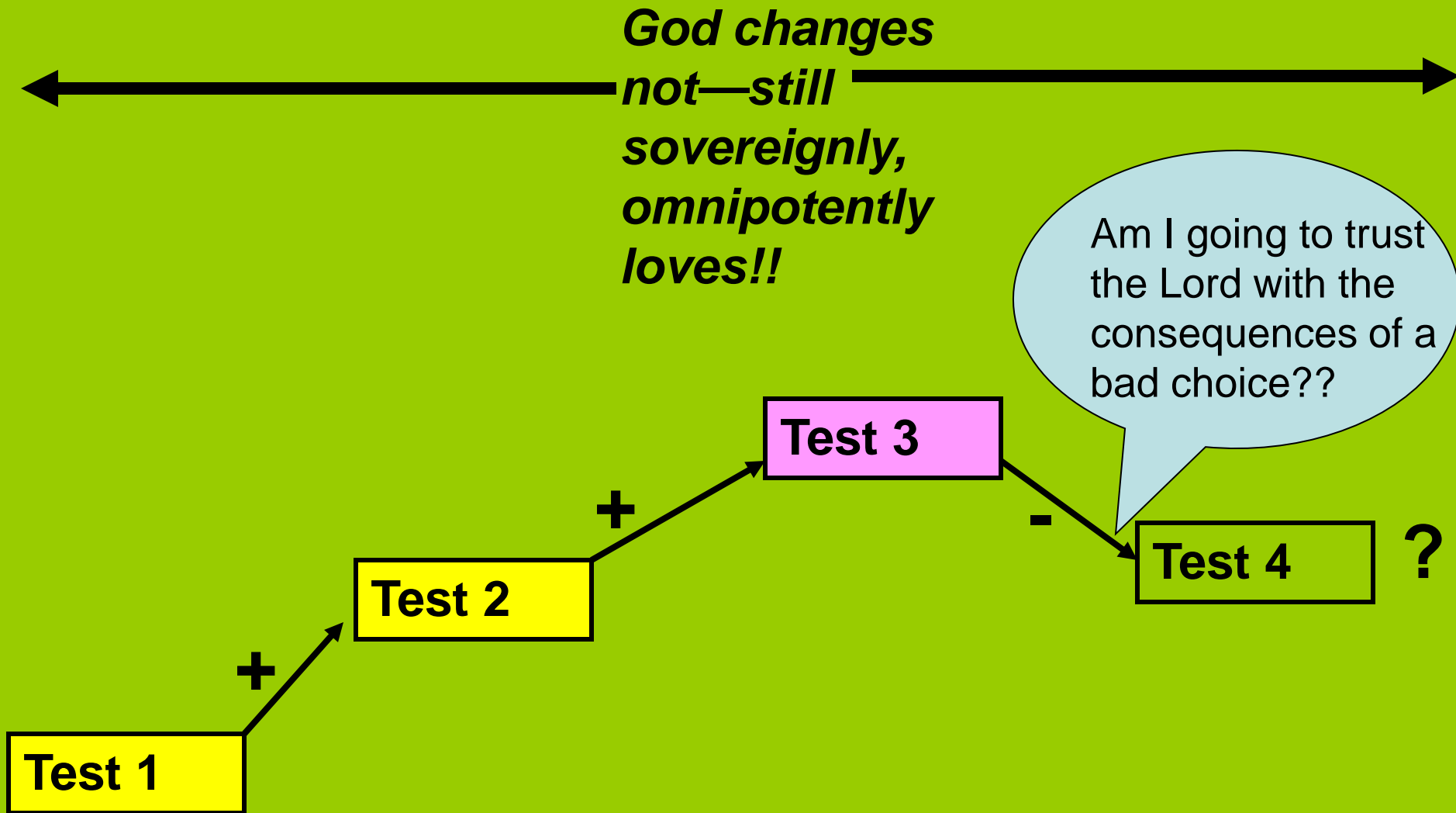


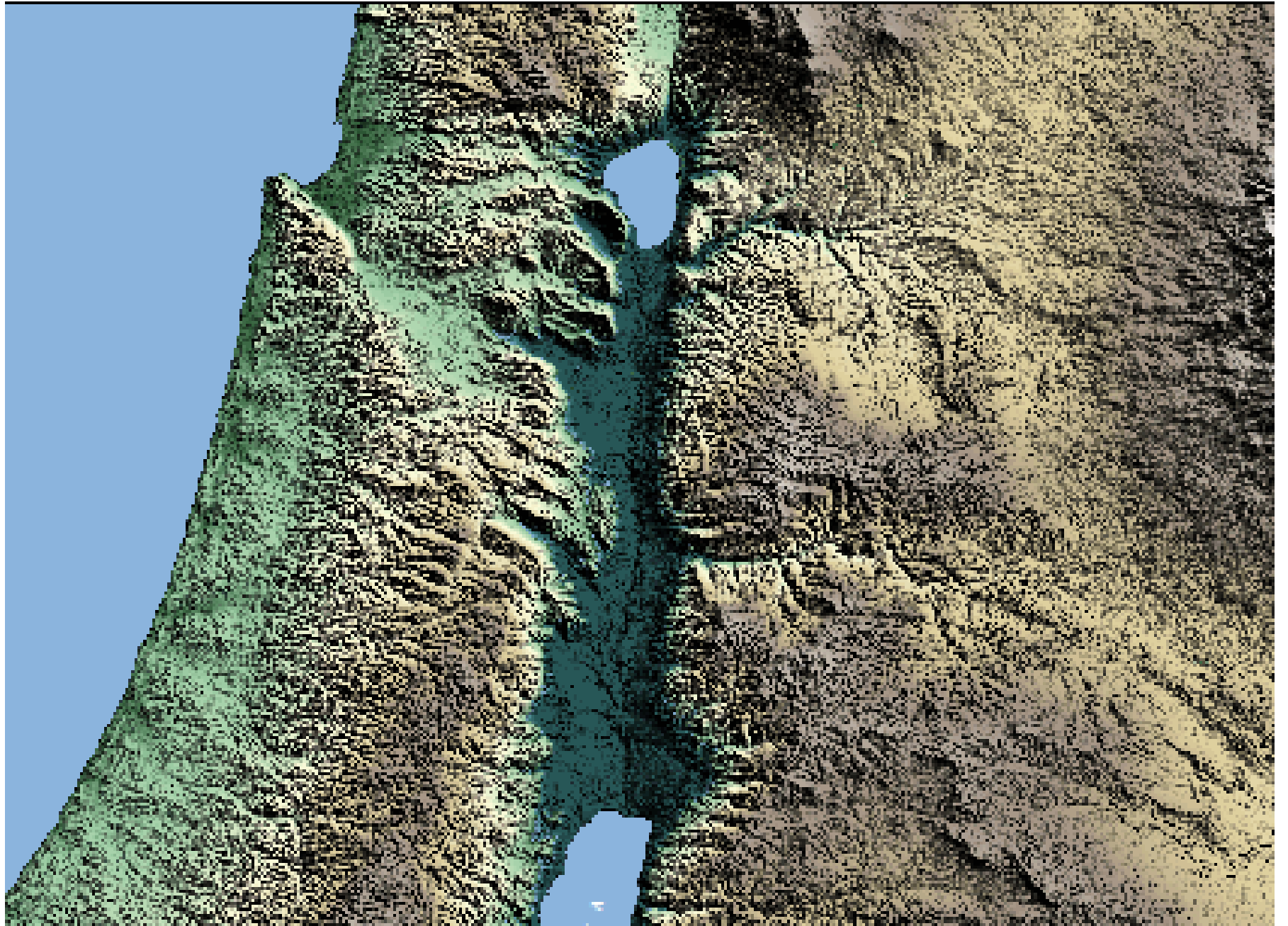
Pagan: Good/Evil Mix is Forever “Normal”





Providence of Testing





“What distinguishes Yahweh so sharply from Baal is His *intimate association with history*. He was not bound to the cycle of the seasons but guided his people through history toward a goal. The decisive event was not the victory over the primeval dragon [of chaos] but the victory over the Egyptians. . . .”

A. S. Kapelrud, The Ras Shamra Discoveries and the Old Testament.

p52.

“There is no such thing as revealed truth. There are truths of revelation, that is to say, propositions which express the results of correct thinking concerning revelation; but they are not themselves directly revealed.” –

Liberal theologian William Temple

“When we review the geographical data as a whole the details appear to be much too accurate to be due either to chance or to oral tradition. The account of the journeyings in chapters 1-3 is altogether realistic and quite unlike an introduction prefixed to a collection of old laws; it bears every sign of originality. The views described. . .of the Moabite country. . .must have been seen by human eyes; the antiquarian notes also belong to the period and are not the result of archaeological research.”

G. T. Manley, The Book of the Law: Studies in the Date of Deuteronomy, p 64.